

Technical Parameters

CONTRIBUTE WISDOM AND STRENGTH TO THE IMPROVEMENT OF QUALITY

	<div>DSC-200</div> 	<div>DSC-410</div> 	<div>DSC-810</div> 
Channels	2	4	8
Temperature	37°C		
Speed	0~4000rpm		
Sample Volume	20~4000mg		
Buffer Volume	0.3-10mL		
Screen	7 inches,touch screen		
User Programs	Default programs+custom programs+500 storable programs		
Weight	9 kg	10.3 kg	18 kg
Dimensions (W*D*H)	215*380*190 mm	215*380*190 mm	415*381*256 mm

Consumables

CONTRIBUTE WISDOM AND STRENGTH TO THE IMPROVEMENT OF QUALITY

	<b>Enzymatic Digestion Kits</b> <ul style="list-style-type: none"><li>Optimized enzymatic reagents,protecting surface antigens</li><li>Meet the dissociation of human, rat, mouse and other species</li><li>Meet the dissociation of tumors, brain, skin, intestine, fat and other difficult tissues</li></ul>
	<b>Heating Jacket</b> <ul style="list-style-type: none"><li>Stable and accurate temperature （37°C）</li><li>Temperature fluctuation range of ±0.5°C</li></ul>
 <small>*Not sold in the U.S.</small>	<b>Tissue processing tube</b> <ul style="list-style-type: none"><li>Independent package, safe and sterile</li><li>Sample volume:20-4000mg</li><li>Buffer volume： 0.3-10mL</li></ul>

Order Information

CONTRIBUTE WISDOM AND STRENGTH TO THE IMPROVEMENT OF QUALITY

Cat No.	Product Description	Specification
DSC-200	Single Cell Suspension Dissociator	2 channels
DSC-410	Single Cell Suspension Dissociator	4 channels
DSC-810	Single Cell Suspension Dissociator	8 channels
SCT-25	Tissue Processing Tube	25 pcs/box
SCT-100	Tissue Processing Tube	100 pcs/box
HJ-400	Heating Jacket	4 pcs/box

Cat No.	Product Description	Specification
DHTE-5001	High Activity Tumor Tissue Enzymatic Digestion Kit(Mouse)	50T
DHNE-5002	High Activity Neonatal Brain Enzymatic Digestion Kit(Mouse and Rat)	50T
DHABE-5003	High Activity Adult Brain Enzymatic Digestion Kit(Mouse and Rat)	50T
DHGT-5004	High Activity General Tissue Enzymatic Digestion Kit	50T
DHTEH-2505	High Activity Tumor Tissue Enzymatic Digestion Kit(Human)	25T
DHDR-5006	High Efficiency Debris Removal Kit	50T
DHIE-5007	High Activity Intestine Tissue Enzymatic Digestion Kit(Mouse)	25T
DHBTE-2508	High Activity Brain Tumor Enzymatic Digestion Kit	25T
DHWSE-2509	High Activity Whole Skin Enzymatic Digestion Kit(Mouse)	50T
DHAE-5010	High Activity Adipose Tissue Enzymatic Digestion Kit(Mouse and Rat)	50T
DHNE-2511	High efficiency nuclei extraction kit	25T
DHME-5012	High Activity Muscle Tissue Enzymatic Digestion Kit （Mouse and Rat）	50T
DHHE-2515	High Activity Hepatocyte Extraction Kit （Mouse and Rat）	15T
DHUTE-2516	High Activity Hepatocyte Extraction Kit （Mouse and Rat）	25T

RWD Life Science Co.,Ltd

Add: 9/F, 19/F, 20/F, Building 7A, 9/F Building D, Shenzhen International Innovation Valley, XiLi Street, Dashi 1s' Road, Nanshan District, Shenzhen, Guangdong, China. E-mail: rwd@rwdstco.com

RWD Life Science Inc.

Add: 10410 Corporate Drive, Sugar Land, TX 77478, USA  
Tel: (858)900-5879 Support: service@rwdls.com  
Web: www.rwdstco.com

RWD | 瑞沃德

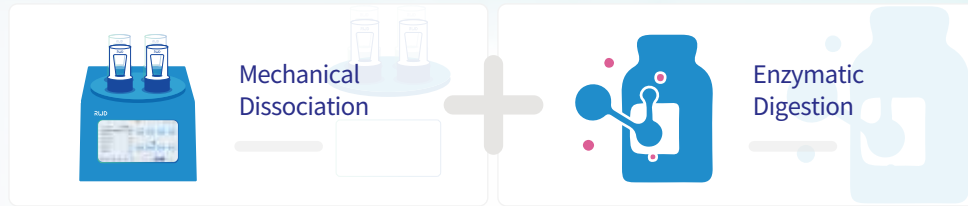
Single Cell Suspension  
Dissscociator



RWD Single cell suspension dissociator can gently dissociate freesh tissue into single cell suspension or tissue homogenate.It matches with tissue processing tubes, tissue dissociation kits, and optimizational programs for different tissues. The preparation of single cell suspension can be completed within 15-30 minutes,and multi-channels can operate independently, wiwhich make the experiments more efficient. RWD Single cell suspension dissociator is a good for obtaning high quality single cell suspension, homogenous and high experimental repeatability.

## Product Principle

CONTRIBUTE WISDOM AND STRENGTH TO THE IMPROVEMENT OF QUALITY



## Product Characteristics

CONTRIBUTE WISDOM AND STRENGTH TO THE IMPROVEMENT OF QUALITY

### High quality

- Single cell suspension with high viability and yield
- Gentle dissociation protects cell surface antigens

### High efficiency

- Completed within 15-30 minutes
- Multi-channels operate independently
- Quick dissociation with one click

### Standardization

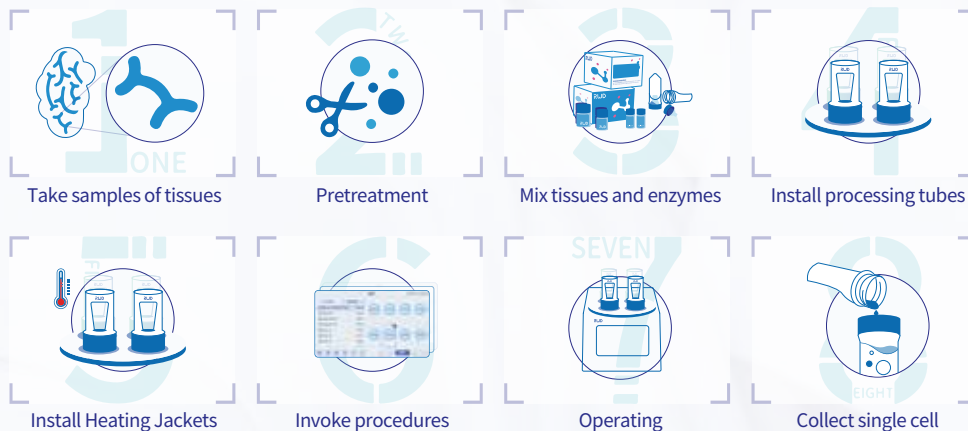
- A variety of default dissociation procedures
- Specialized accessories, reagents and consumables
- Stable temperature(37°C), accurate speed (0~4000rpm)

### Multi-applications

- Meet a variety of downstream experiments
- Multiple enzymatic digestion kits cover most tissues

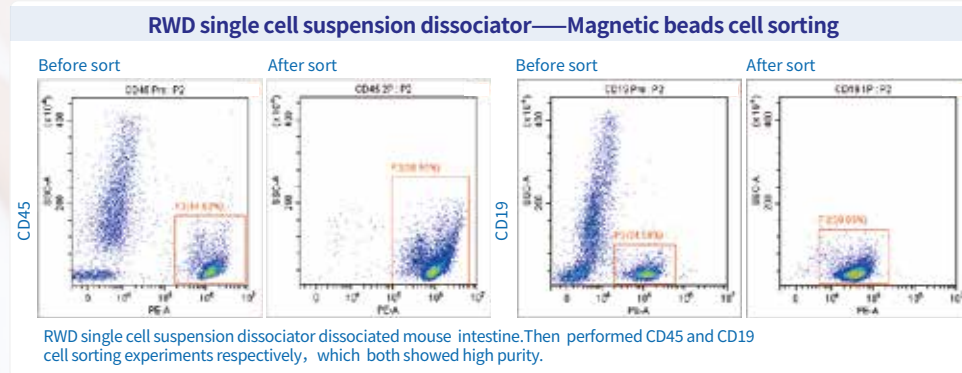
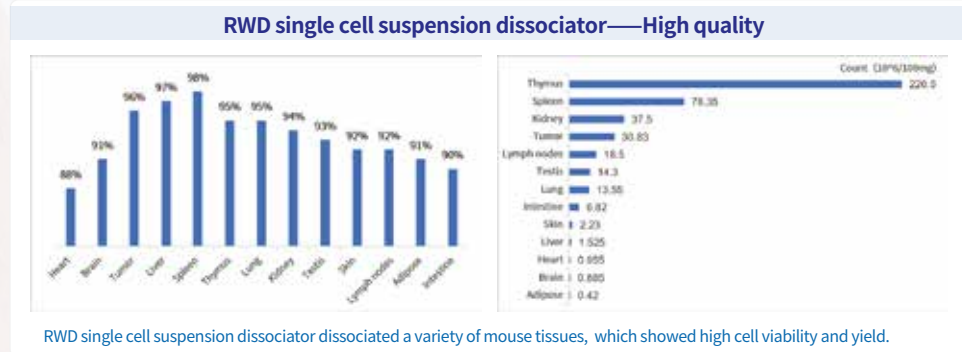
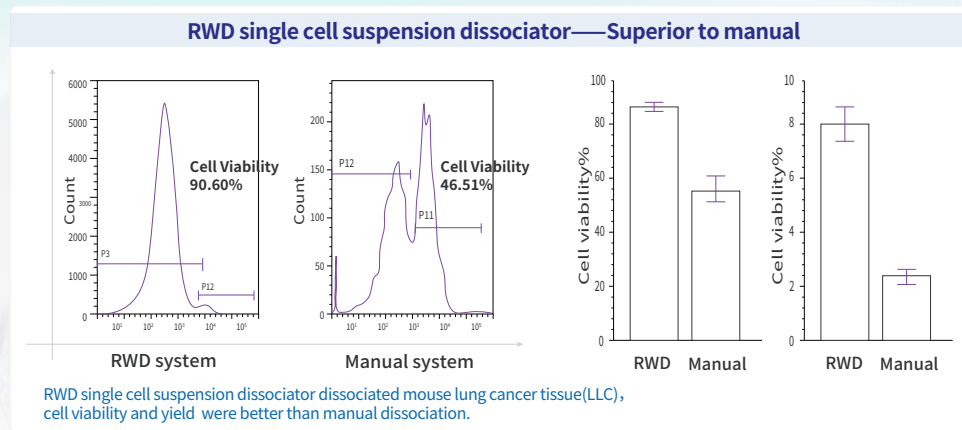
## Workflow

CONTRIBUTE WISDOM AND STRENGTH TO THE IMPROVEMENT OF QUALITY

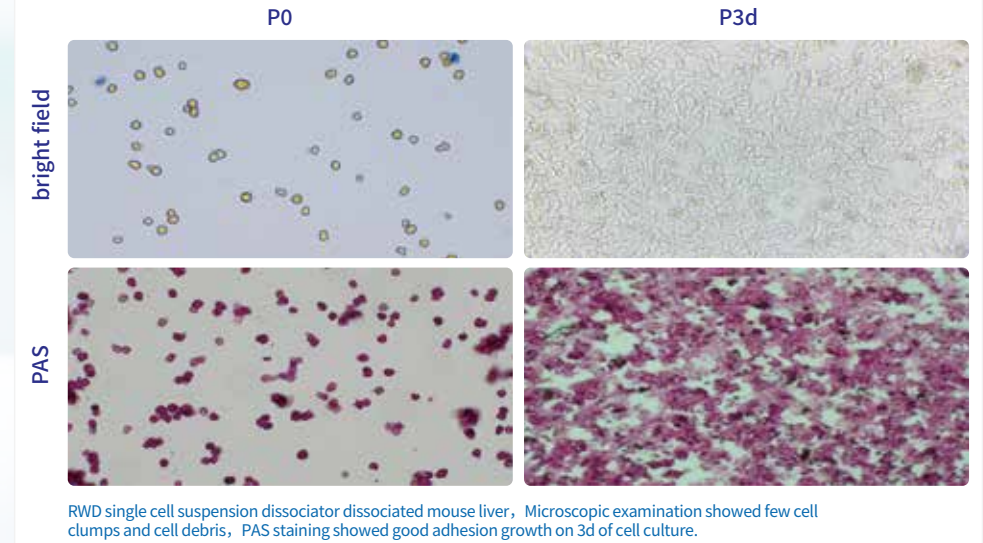


## Data presentation

CONTRIBUTE WISDOM AND STRENGTH TO THE IMPROVEMENT OF QUALITY



### RWD single cell suspension dissociator—Primary cell culture



## Product Application

CONTRIBUTE WISDOM AND STRENGTH TO THE IMPROVEMENT OF QUALITY

**Single cell sequencing**

**Flow cytometry**

**Magnetic beads cell sorting**

**Primary cell culture**

**Organoid culture**

**Experimental medicines testing**



# Single Cell Suspension Dissociator



RWD Single cell suspension dissociator can gently dissociate fresh tissue into single cell suspension or tissue homogenate. It matches with tissue processing tubes, tissue dissociation kits, and optimization programs for different tissues. The preparation of single cell suspension can be completed within 15-30 minutes, and multi-channels can operate independently, which makes the experiments more efficient.

RWD Single cell suspension dissociator is a good choice for obtaining high quality single cell suspension, homogenous and high experimental repeatability.





## Product Principle

CONTRIBUTE WISDOM AND STRENGTH TO THE IMPROVEMENT OF QUALITY



Mechanical  
Dissociation



Enzymatic  
Digestion



## Product Characteristics

CONTRIBUTE WISDOM AND STRENGTH TO THE IMPROVEMENT OF QUALITY



### High quality

- Single cell suspension with high viability and yield
- Gentle dissociation protects cell surface antigens



### High efficiency

- Completed within 15-30 minutes
- Multi-channels operate independently
- Quick dissociation with one click



### Standardization

- A variety of default dissociation procedures
- Specialized accessories, reagents and consumables
- Stable temperature(37°C), accurate speed (0~4000rpm)



### Multi-applications

- Meet a variety of downstream experiments
- Multiple enzymatic digestion kits cover most tissues



## Workflow

CONTRIBUTE WISDOM AND STRENGTH TO THE IMPROVEMENT OF QUALITY



Take samples of tissues



Pretreatment



Mix tissues and enzymes



Install processing tubes



Install Heating Jackets



Invoke procedures



Operating



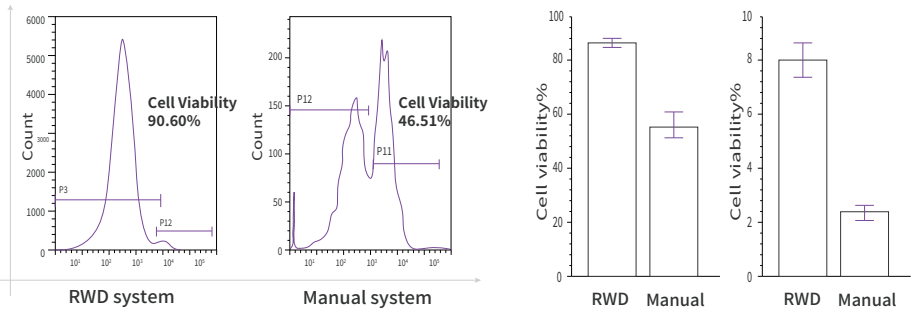
Collect single cell



# Data presentation

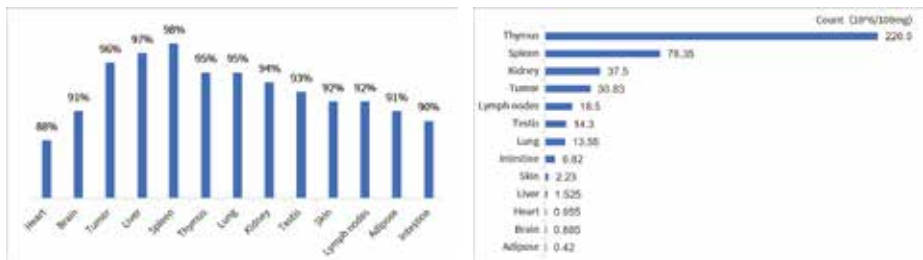
CONTRIBUTE WISDOM AND STRENGTH TO THE IMPROVEMENT OF QUALITY

## RWD single cell suspension dissociator—Superior to manual



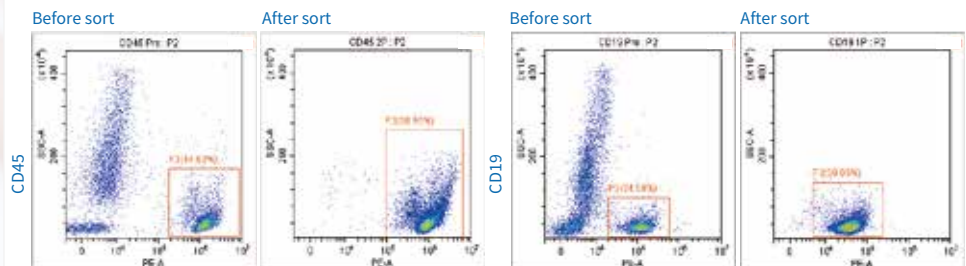
RWD single cell suspension dissociator dissociated mouse lung cancer tissue(LLC), cell viability and yield were better than manual dissociation.

## RWD single cell suspension dissociator—High quality



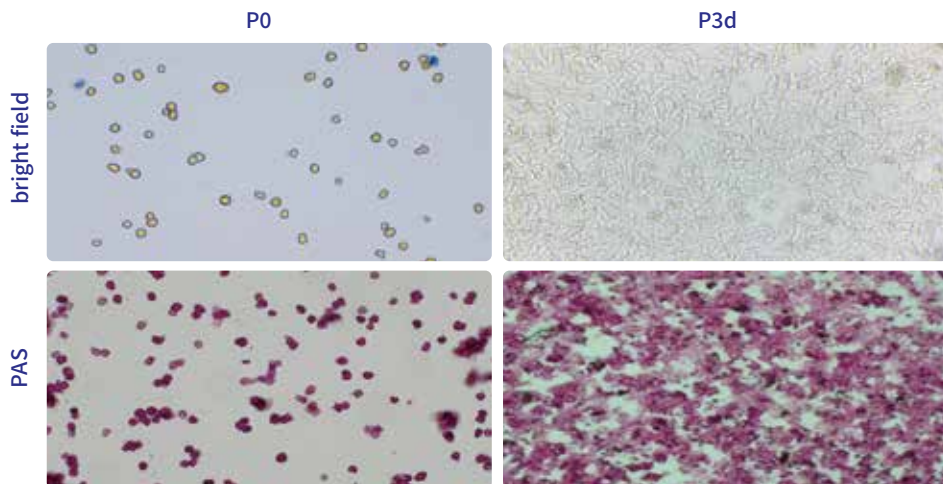
RWD single cell suspension dissociator dissociated a variety of mouse tissues, which showed high cell viability and yield.

## RWD single cell suspension dissociator—Magnetic beads cell sorting



RWD single cell suspension dissociator dissociated mouse intestine. Then performed CD45 and CD19 cell sorting experiments respectively, which both showed high purity.

## RWD single cell suspension dissociator—Primary cell culture



RWD single cell suspension dissociator dissociated mouse liver, Microscopic examination showed few cell clumps and cell debris, PAS staining showed good adhesion growth on 3d of cell culture.

## Product Application

CONTRIBUTE WISDOM AND STRENGTH TO THE IMPROVEMENT OF QUALITY



Single cell  
sequencing



Flow  
cytometry



Magnetic  
beads cell sorting



Primary cell  
culture



Organoid  
culture



Experimental  
medicines testing



## Technical Parameters

CONTRIBUTE WISDOM AND STRENGTH TO THE IMPROVEMENT OF QUALITY

	DSC-200	DSC-410	DSC-810
Channels	2	4	8
Temperature	37°C		
Speed	0~4000rpm		
Sample Volume	20~4000mg		
Buffer Volume	0.3-10mL		
Screen	7 inches,touch screen		
User Programs	Default programs+custom programs+500 storable programs		
Weight	9 kg	10.3 kg	18 kg
Dimensions (W*D*H)	215*380*190 mm	215*380*190 mm	415*381*256 mm

## Consumables

CONTRIBUTE WISDOM AND STRENGTH TO THE IMPROVEMENT OF QUALITY



### Enzymatic Digestion Kits

- Optimized enzymatic reagents,protecting surface antigens
- Meet the dissociation of human, rat, mouse and other species
- Meet the dissociation of tumors, brain, skin, intestine, fat and other difficult tissues



### Heating Jacket

- Stable and accurate temperature (37°C)
- Temperature fluctuation range of  $\pm 0.5^{\circ}\text{C}$



\*Not sold in the U.S.

### Tissue processing tube

- Independent package, safe and sterile
- Sample volume:20-4000mg
- Buffer volume: 0.3-10mL

# Order Information

CONTRIBUTE WISDOM AND STRENGTH TO THE IMPROVEMENT OF QUALITY

Cat No.	Product Description	Specification
DSC-200	Single Cell Suspension Dissociator	2 channels
DSC-410	Single Cell Suspension Dissociator	4 channels
DSC-810	Single Cell Suspension Dissociator	8 channels
SCT-25	Tissue Processing Tube	25 pcs/box
SCT-100	Tissue Processing Tube	100 pcs/box
HJ-400	Heating Jacket	4 pcs/box

Cat No.	Product Description	Specification
DHTE-5001	High Activity Tumor Tissue Enzymatic Digestion Kit(Mouse)	50T
DHNBE-5002	High Activity Neonatal Brain Enzymatic Digestion Kit(Mouse and Rat)	50T
DHABE-5003	High Activity Adult Brain Enzymatic Digestion Kit(Mouse and Rat)	50T
DHGT-5004	High Activity General Tissue Enzymatic Digestion Kit	50T
DHTEH-2505	High Activity Tumor Tissue Enzymatic Digestion Kit(Human)	25T
DHDR-5006	High Efficiency Debris Removal Kit	50T
DHIE-5007	High Activity Intestine Tissue Enzymatic Digestion Kit(Mouse)	25T
DHBT-2508	High Activity Brain Tumor Enzymatic Digestion Kit	25T
DHWSE-2509	High Activity Whole Skin Enzymatic Digestion Kit(Mouse)	50T
DHAE-5010	High Activity Adipose Tissue Enzymatic Digestion Kit(Mouse and Rat)	50T
DHNE-2511	High efficiency nuclei extraction kit	25T
DHME-5012	High Activity Muscle Tissue Enzymatic Digestion Kit (Mouse and Rat)	50T
DHHE-2515	High Activity Hepatocyte Extraction Kit (Mouse and Rat)	15T
DHUTE-2516	High Activity Hepatocyte Extraction Kit (Mouse and Rat)	25T

## RWD Life Science Co.,Ltd

Add: 9/F, 19/F, 20/F, Building 7A, 9/F Building D, Shenzhen International Innovation Valley, XiLi Street, Dashi 1s' Road, Nanshan District, Shenzhen, Guangdong, China. E-mail: [rwd@rwdstco.com](mailto:rwd@rwdstco.com)

## RWD Life Science Inc.

Add: 10410 Corporate Drive, Sugar Land, TX 77478, USA  
Tel: (858)900-5879 Support: [service@rwdls.com](mailto:service@rwdls.com)  
Web: [www.rwdstco.com](http://www.rwdstco.com)