



complexity simplified.

Quick Reference Card

Muse[®] Human B Cell Kit MIM100103

For use in laboratory research studies to determine the B cell count, total lymphocyte count, and B cell percent of lymphocytes in human whole blood and PBMC samples

CAUTION: This kit should not be used for patient diagnosis or patient management

For Research Use Only. Not for use in diagnostic procedures.

Storage Conditions

Store the Muse[®] Human B Cell Cocktail and 1X Assay Buffer BA at 2 to 8°C, protected from light. Store the Human 1X Lysing Solution at room temperature.

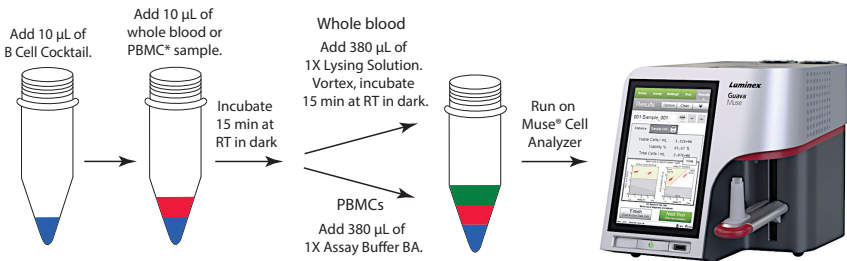
Kit Components

- Muse[®] Human B Cell Cocktail (Part No. 4700-1635, 100 tests/vial)
- Human 1X Lysing Solution (Part No. 4700-1620, 100 tests/vial)
- 1X Assay Buffer BA (Part No. 4700-1360, 100 tests/vial)

Materials Recommended

- Guava[®] Muse[®] Cell Analyzer
- Whole blood or PBMC samples
- Micropipettors
- Disposable micropipettor tips
- Microcentrifuge tubes with screw caps, 1.5 mL (VWR Catalog No. 16466-030, or equivalent)
- Vortex mixer

Assay Protocol



* PBMC samples should be in 1X Assay Buffer BA at a concentration of 4×10^6 to 2×10^7 cells/mL.

NOTE: A detailed kit user's guide can be found at www.luminexcorp.com/flowkits.

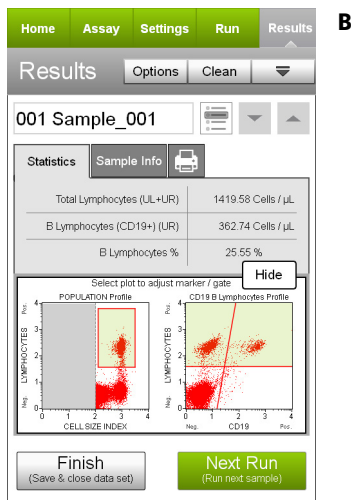
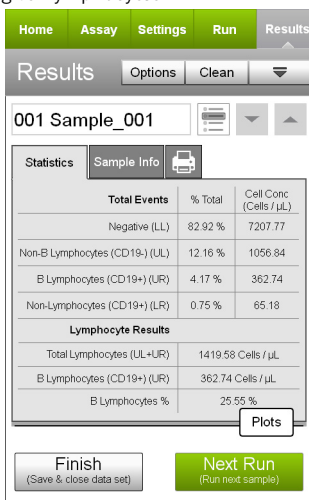
Expected Results

The Muse® Human B Cell Assay provides results for B cell lymphocyte count, B cell percent, and total lymphocyte count.

Results for each of the four quadrants are as follows:

- Upper-left quadrant: non-CD19 lymphocytes [lymphocyte(+) and CD19(-)]
- Upper-right quadrant: B lymphocytes [lymphocyte(+) and CD19(+)]
- Lower-left quadrant: negative cells [lymphocyte(-) and CD19(-)]
- Lower-right quadrant: CD19 non-lymphocytes [lymphocyte(-) and CD19(+)]

Figures A and B. Example Data: Results obtained with the Muse Human B Cell module for adult whole blood stained with the Muse Human B Cell Kit and acquired on the Guava® Muse Cell Analyzer. Figure A shows results without dot plots, while Figure B shows results with optional dot plots. The statistics show cells/ μL in the original sample, population percentages, as well as total lymphocyte count and B cell percentage of lymphocytes. The first plot in Figure B shows Cell Size vs. Lymphocytes and the second plot shows CD19 staining vs. Lymphocytes.



The latest version of Muse software, which includes all assay modules, as well as the kit user's guide, can be found at www.luminexcorp.com/flowkits.

Related Products

For Research Use Only. Not for use in diagnostic procedure.

- Muse® Human CD4 T Cell Kit - MIM100101
- Muse® Human CD8 T Cell Kit - MIM100102
- Muse® Human Lymphocyte CD69 Kit - MIM100104
- Muse® Human Lymphocyte CD25 Kit - MIM100105
- Muse® System Check Kit - MCH100101
- Muse® Count & Viability Kit (40mL) - MCH100102
- Muse® Annexin V & Dead Cell Kit - MCH100105

Guava and Muse are trademarks of Luminex Corporation, registered in the U.S. and other countries.

Part No. 4600-3442 Rev D, February 2020, Printed in the USA.

© 2020 Luminex Corporation. All rights reserved.